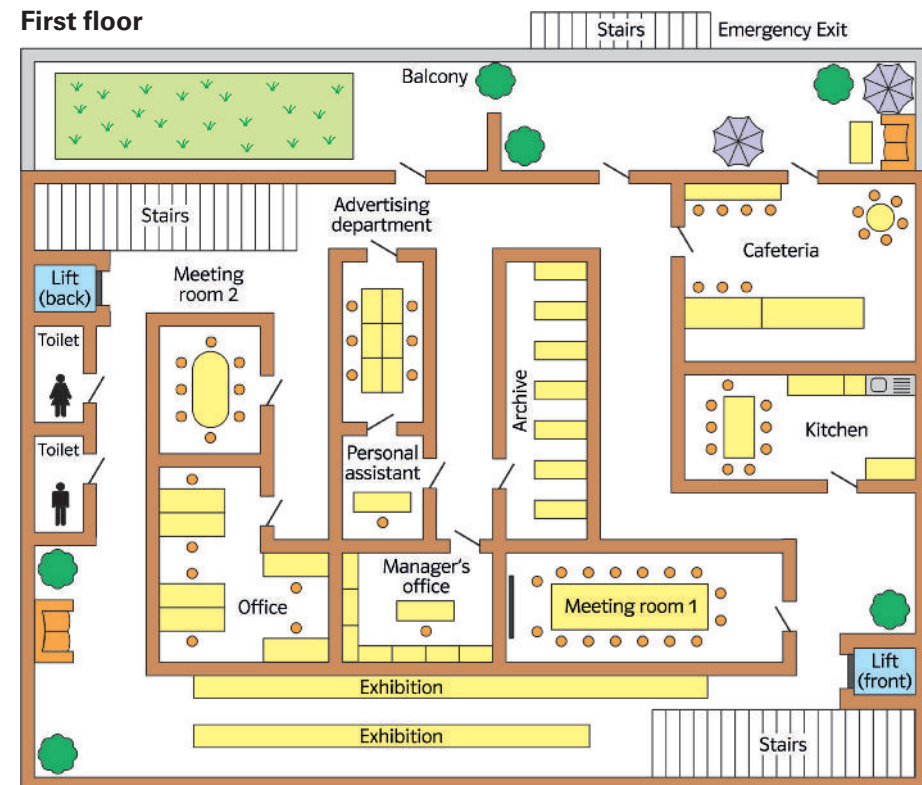
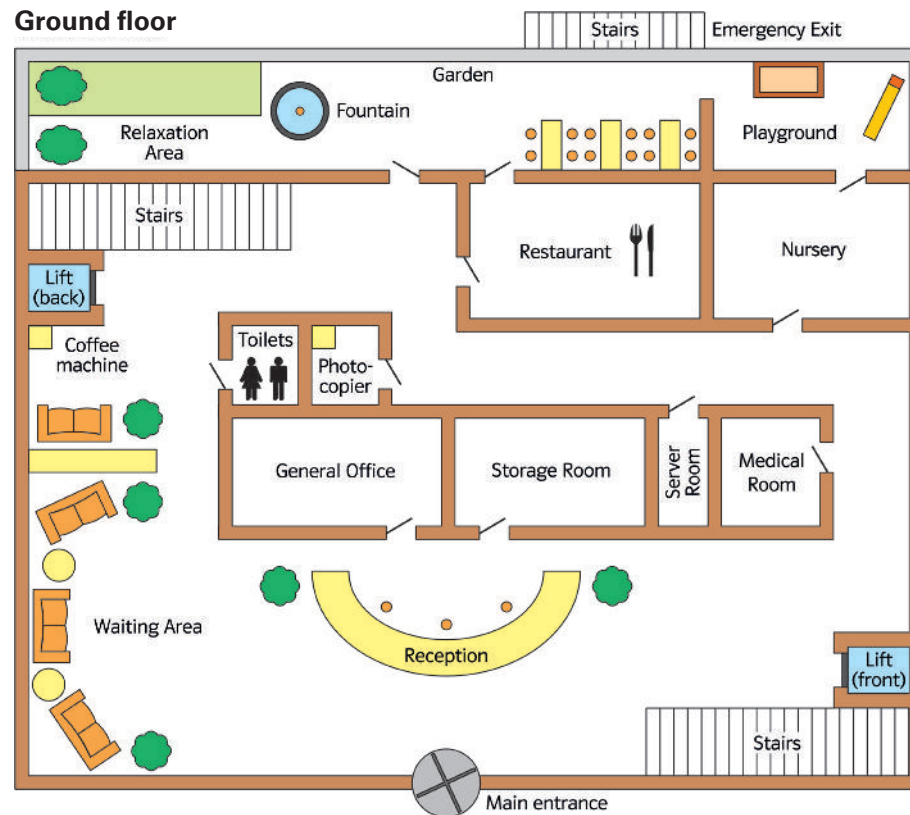


# How do I get there? – Practise giving directions inside a building

## Tasks

1. Listen to the three descriptions and find out where the visitor wants to go to. With pens in three different colours, draw the way in the floor plan while listening.
2. With a partner, make dialogues using the floor plan below. One of you is a visitor who asks for directions and one of you is the receptionist who gives the directions.



## Vocabulary

**emergency exit:** der Notausgang – **nursery:** die Kinderbetreuung – **general office:** die Zentrale – **storage room:** der Lagerraum, der Abstellraum – **main entrance:** der Haupteingang – **exhibition:** die Ausstellung – **personal assistant:** der/die Sekretär/-in – **advertising department:** die Werbeabteilung, die Marketingabteilung